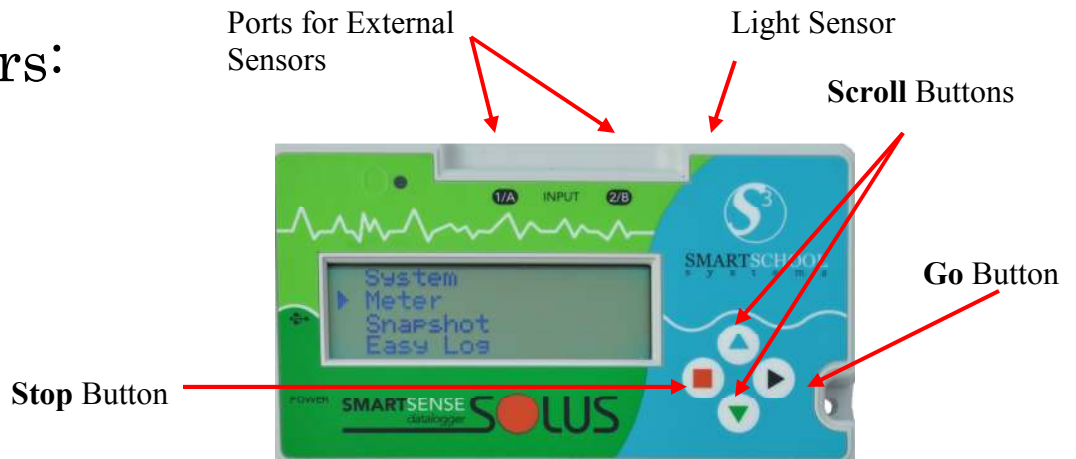


SOLUS Quick Start Guide

Built-In Sensors:

Sound Level
Light Level
Temperature
Barometric Pressure
Relative Humidity

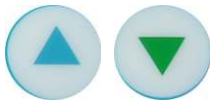


SOLUS buttons



Go

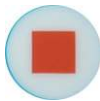
Start collecting data; confirm menu options; "wake up"



logging

Scroll

Scroll through menus during setup; browse data while



Stop

Stop logging; exit setup menu

Working Stand-Alone Modes:

Snapshot

Monitors data from all built-in sensors and any external sensors. Captures and stores specific data points when you press the GO button. Can store over 700 samples in a single snapshot session.

Meter

In this mode, the SOLUS continuously takes measurements from all active sensors, displays it on the LCD screen but does not store it. The display is updated once a second.

Easy Log

In EasyLog mode the SOLUS collects data from all active sensors, displays it and stores it in memory. The stored data can later be downloaded to a computer and analyzed with the SmartSense Software. For easy logging, the SOLUS begins collecting data at fast rate and adjusts with slower rates as logging continues.

Timing

In Timer mode the SOLUS measures simple time events from input A to input B. digital switches, like photo gates, must be connected to both input A and input B.

*******Technical support, please call 281-312-1297 or email
support@smartschoolsystems.com**

How to Check Battery Level:

To check the battery level, choose SYSTEM from the main menu, then BATTERY LIFE.

How to Change the Temperature, Light and Pressure Range:

To change the range of any configurable sensor, choose the METER mode from the main menu, scroll to the sensor that you would like to change and press GO. Ranges for both internal and external sensors can be changed in this way. The internal sensors that can be changed are temperature, light, and air pressure.

Temperature Ranges

-22 -- 230 F
0 -- 110 C
-30 -- 110 C
0 -- 232 F

Light Ranges

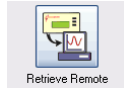
In/Out 0 – 10k lx
Outdoor 0 – 100 k lx
In/Fast 0 – 1000 lx
Indoor 0 – 1000 lx

Pressure Ranges

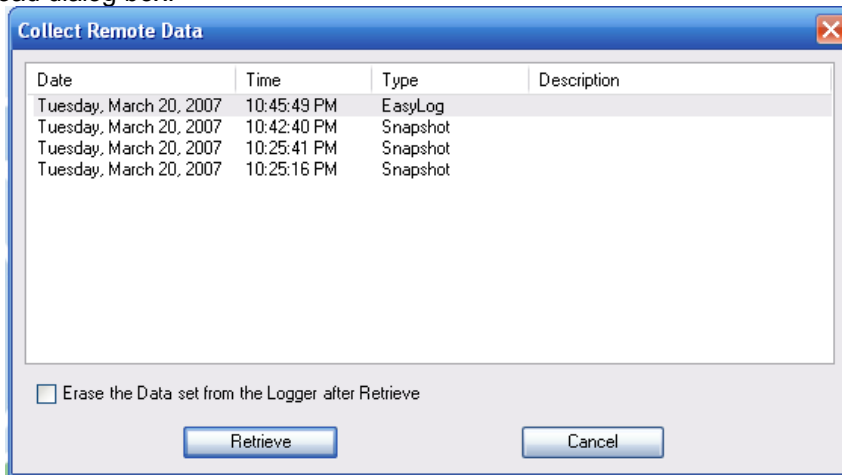
85 – 110 kPa
850 – 1100 mbar
25 – 33 inHg

Download Data to the Computer:

1. Connect the SOLUS to the computer and open the SmartSense software. If the SOLUS is collecting data, click **STOP** to end collecting and to return to the main menu. – If the SOLUS is collecting in EasyLog mode, press STOP, GO, GO to stop logging.



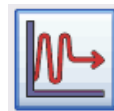
2. Click Retrieve Remote on the HOME screen to open the Download dialog box:



The dialog contains details of the stored experiments: the starting time and date, the logging mode and the number of samples taken

3. Click an option to select the experiment you wish to download, then click **OK**. Then choose the channels (sensors) you wish to download data from. Once the transfer is complete, the data will be displayed automatically in the graph window.

Collect data while connected to the computer (EasyLog):



1. Open the EasySense software and choose EasyLog from the HOME screen.
2. Select the sensors you wish to utilize. Click Finish.



3. Press the START/STOP button on the toolbar to begin logging.