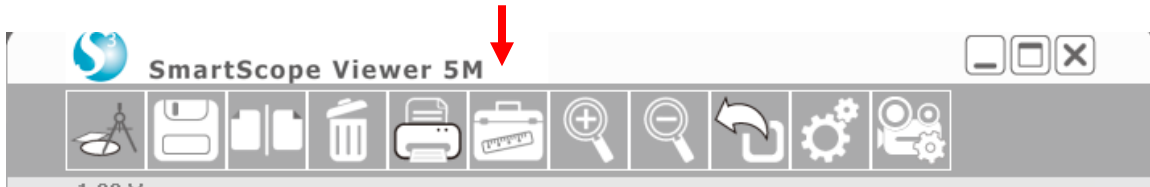


How to Measure a Line Using the SmartMicroScope 5M

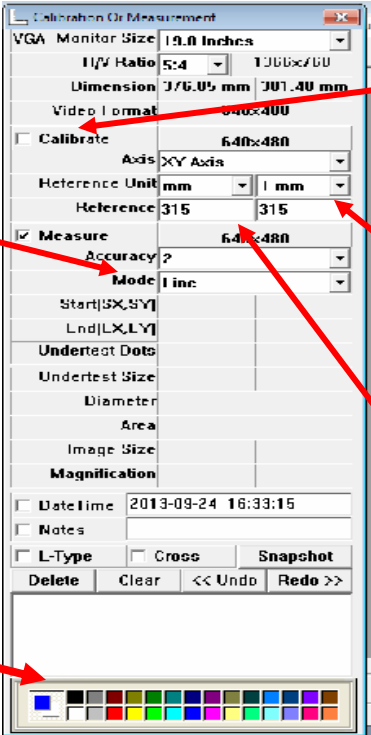
Connect the SmartMicroScope to the USB port and then open the software.

Place the SmartMicroScope 5M on a ruler and adjust the focus knob until the image is sharp.

1. Put a ruler under the SmartMicroScope and turn the focus dial to bring into focus
2. Using the function keys at the top of the SmartMicroScope Viewer 5M Click on the Measurement Tool



3. From here, The Calibration Or Measurement Window will Open



3. First, change the "Mode" to Line

4. Change the Line Color, if needed

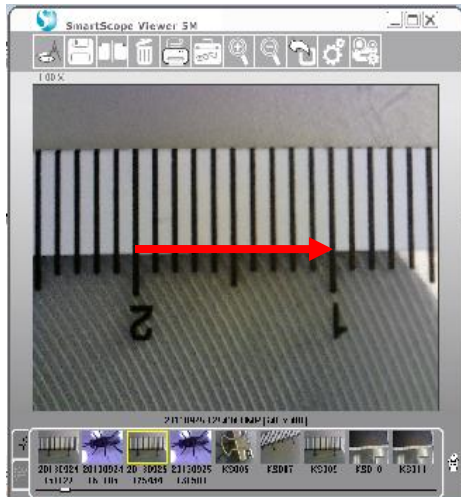
5. Click on the Calibrate box

6. Change the "Reference Unit" to the desired measurement(example: inches, mm, mil)

7. Change the Reference to 10
Note: The distance between the 1 and 2 is 10 mm

*****Technical support, please call 281-312-1297, 1-866-722-2051 or email support@smartschoolsystems.com

How to Measure a Line Using the SmartMicroScope 5M



8. Using your mouse, right click and hold. Drag your mouse from the 2 to the 1 on the ruler (left side of each line).

9. Release the right click and the calibration is complete.

10. Click the Measurement button to go back to the live image.



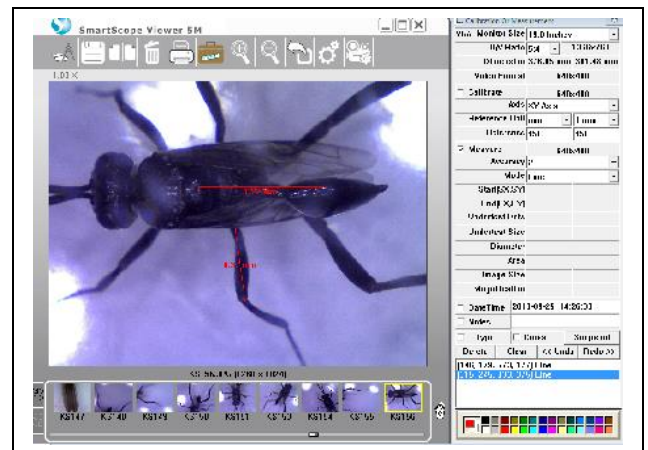
11. Place the object you want to measure under the SmartMicroScope.

12. Click the Measurement icon on the Tool Bar.

13. Move the cursor to the place where you want to begin measuring.

14. Right click the mouse and drag the line across the image

15. Release the mouse and the measurement will be displayed.



16. After finishing the measurement click the snapshot button

Snapshot

or save key



to

*****Technical support, please call 281-312-1297, 1-866-722-2051 or email support@smartschoolsystems.com