

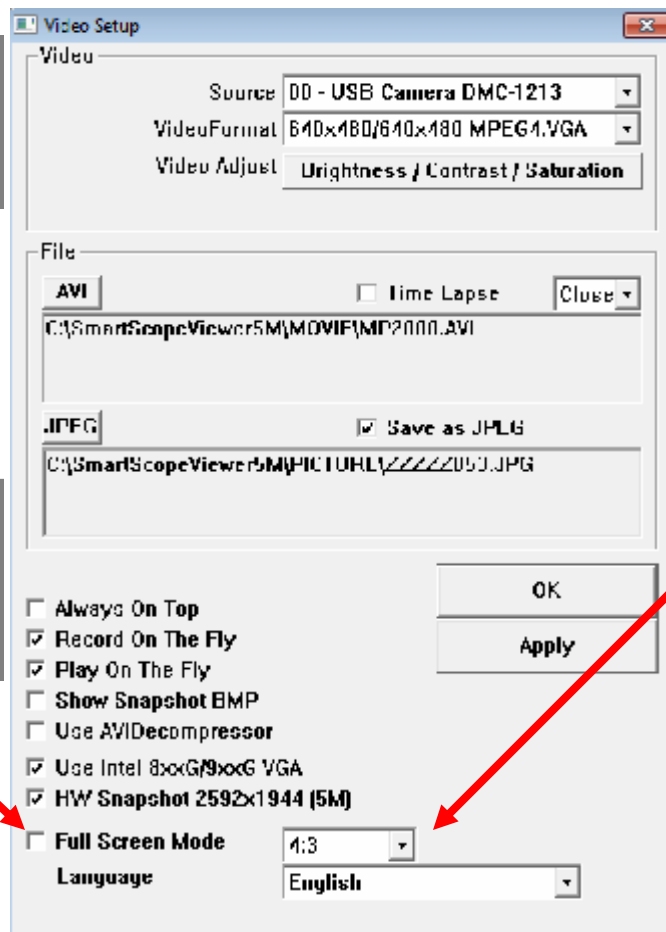
How to Change the Different Full Screen Modes

1. Connect the SmartMicroScope to the USB port and then open the software.
2. Using the function keys at the top of the SmartMicroScope Viewer 5M Click on the

Gear Icon Tool



3. The Video Setup Window will open



NOTE: To have the software open in full screen mode, check this box

4. You can now change the Full Screen Mode

- A. 4:3 for computer monitor
- B. FULL to fill the screen with the image
- C. ICON to display the large image and tool bars

5. Press OK and your changes will automatically be added to the screen
6. When in Full Screen Mode you can press the ESC button to return to exit full screen mode.

*****Technical support, please call 281-312-1297, 1-866-722-2051 or email support@smartschoolsystems.com